

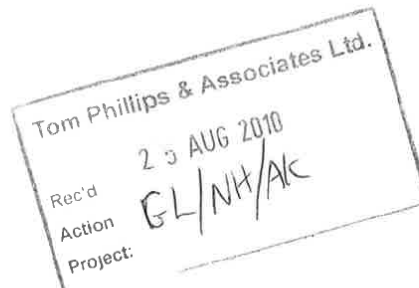


APPENDIX 2: LETTER FROM AN BORD PLEANÁLA, DATED 24TH AUGUST 2010

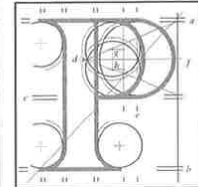
Our Ref: 17.PA0013

Your Ref: College Proteins

Gavin Lawlor
Tom Phillips & Associates,
2-3 Roger's Lane
Lower Baggot Street,
Dublin 2.



An Bord Pleanála



24th August 2010

Re: Biomass Combined Heat And Power (CHP) Plant And Associated Ash
Landfill At College Road, Nobber, County Meath.

Dear Sir,


I have been asked by An Bord Pleanála to refer to the above mentioned development and in particular to your letter dated the 23rd of August, 2010.

In your letter you request an extension of time to comply with the Board's request for further information dated the 18th of June, 2010. Having regard to the amount of information sought, the Board considers it appropriate to grant an extension of time in this case. Therefore, the further information detailed in the Board's letter of the 18th of June, 2010 should now be received by the Board by the 24th of September, 2010.

If you have any queries in relation to the matter please contact the undersigned officer of the Board.

Please quote the above mentioned An Bord Pleanála reference number in any correspondence or telephone contact with the Board.

Yours faithfully,


Kieran Somers
Executive Officer



64 Sráid Maoilbhríde,
Baile Átha Cliath 1.

Tel: (01) 858 8100
LoCall: 1890 275 175
Fax: (01) 872 2684
Web: <http://www.pleanala.ie>
email: bord@pleanala.ie

64 Marlborough Street,
Dublin 1.